

Access control at security gates

with **PROMETHEUS** by TecTradeSolution®



Optimized selection of people with increased temperature indoors and outdoors **Outdoor area. (36°C as maximal peak value)**

We have modified for the current occasion Our solution from process monitoring for the detection of temperature anomalies and adjusted on detecting abnormalities at skin surface temperature for people at entrances, gates, turnstiles or Access doors.

>>Surface monitoring for thermal anomalies under consideration of the ambient temperature<<

The TecTradeSolution® method detects skin surface temperature anomalies - especially outdoors - regardless of temperature, wind or other influences.

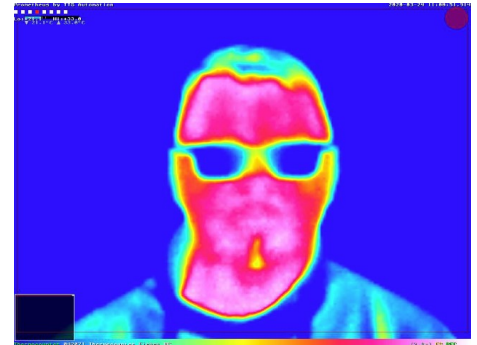
A selection of conspicuous people with increased skin surface temperature is already there possible at the factory gate, when leaving a plane or train - even before they come into contact with others. The surface temperature of the human skin are defined as: "pleasant ambient temperatures". At lower temperatures, wind or other environmental influences fluctuate those temperatures strong and constant.

Our use cases since 2016:

Process monitoring in chemical plants has been set up by us and successful operating outdoors since 4 years. We recognize reliable thermal anomalies on reactor surfaces regardless of other environmental conditions. Thus are evaluated and enable the safe condition of these facilities. at any time.

When measuring the skin surface temperature of humans TecTradeSolution GmbH works with comparable parameters.

PROMETHEUS by TecTradeSolution®



TECNICAL DATA

Plug & Play— Power supply via 230V

Dimensions: Camera housing, crossbar, base plate about
20kg approx: 300x400x1400mm

Equipment: base (ø 800mm)